

# Texas Environmental Data System (TEDS)

Electronic Data Management  
System (EDMS)

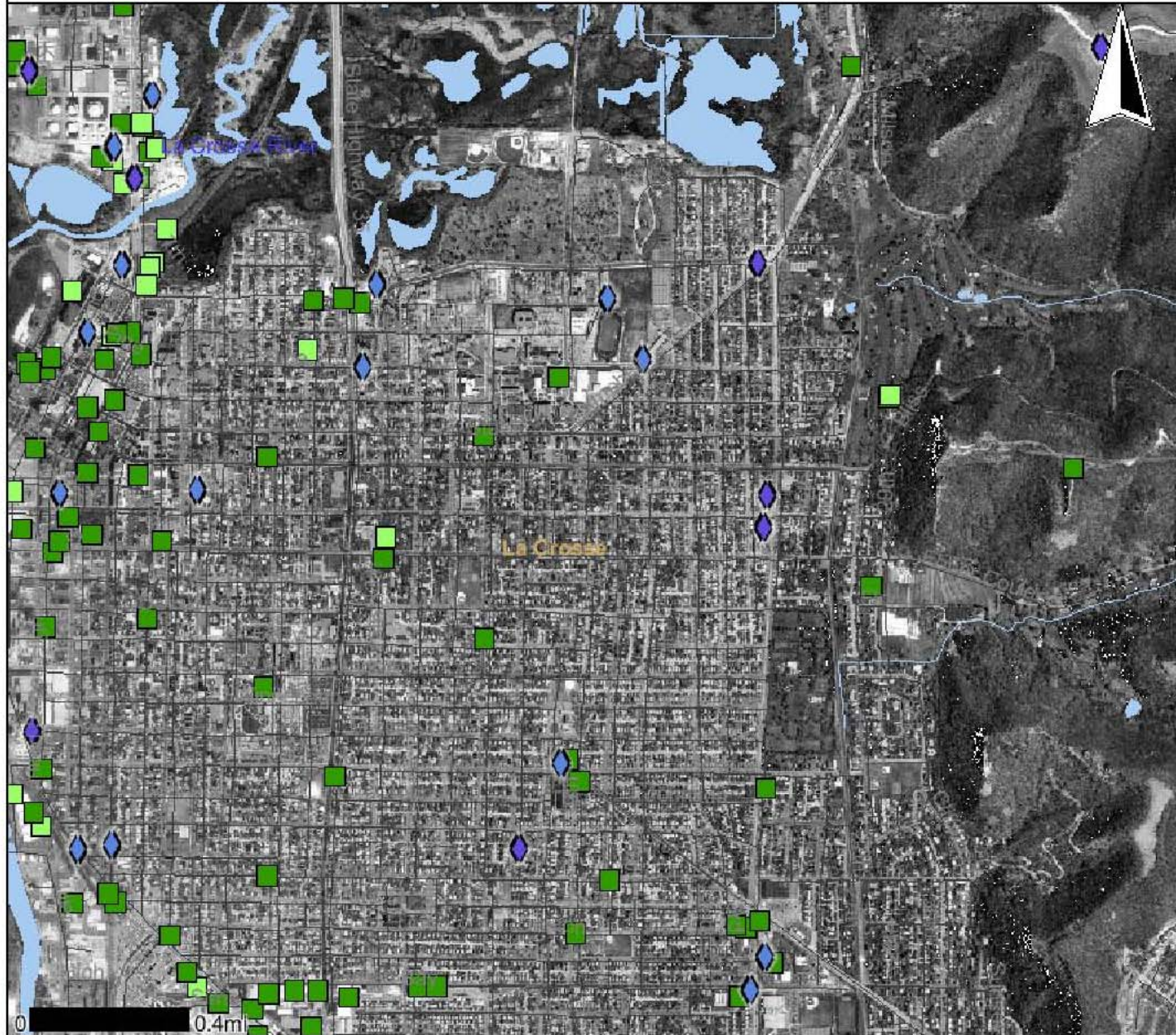


# Data Management System

- Spatial, analytical, geologic data
- Data submitted electronically; data checked for completeness and formatting
- System integrated with applications for visualization, mapping, and modeling of the data
- Ability to share data throughout TCEQ, other agencies, and with public
- RFP will be issued

Map created Tue Jul 25 10:59:56 CDT 2006

### Legend

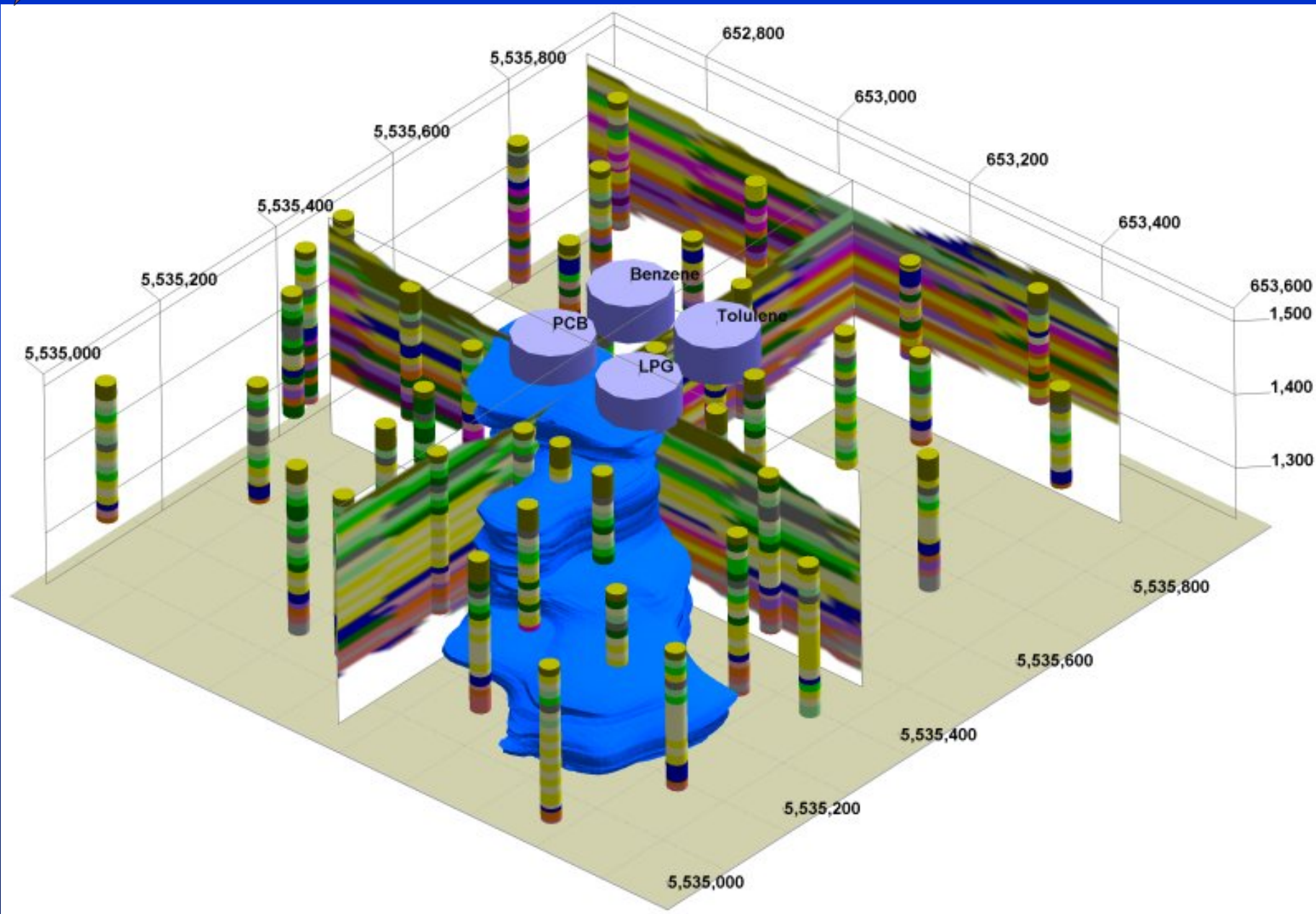


- All activities
  - LUST open
  - ERP open
  - LUST closed
  - ERP closed
- Great Lakes Region
  - LAKE MICHIGAN
  - LAKE SUPERIOR
  - MICHIGAN-UPPER
- County Boundary
- Local Roads
- Rivers and Streams
- 24K Open Water
- Municipalities
- Digital Air Photo

Scale: 1:23,474

DO NOT USE FOR NAVIGATION





## Data Layers

[refresh map](#)

AutoRefresh Map

- Visible Active
- [Chromate Sites](#)
  - [Public Community Water Supply Wells](#)
  - [Air Monitoring Stations](#)
  - [Fish Index Of Biotic Integrity](#)
  - [Known Contaminated Sites List](#)
  - [Place Names](#)
  - [Zip Codes](#)
  - [Municipalities](#)
  - [Counties](#)
  - [Congressional Districts](#)
  - [Legislative Districts](#)
  - [CAFRA Boundary](#)
  - [Highlands](#)
  - [Pinelands Boundary](#)
  - [Open Space \(State\)](#)
  - [Natural Heritage Priority Sites](#)
  - [Pinelands Management Area](#)
  - [Sewer Service Areas](#)
  - [Roads \(NJDOT\)](#)
  - [Roads \(Tele Atlas\)](#)
  - [Category One Waters](#)
  - [Surface Water](#)



## Query

[Find location of Interest](#)

## Legend

- Counties
- Mid-Atlantic States
- New Jersey
- Other Mid-Atlantic States

Set Scale 1: 24000 Go



## Data Layers

[refresh map](#)

AutoRefresh Map

- Visible Active
- [Chromate Sites](#)
  - [Public Community Water Supply Wells](#)
  - [Air Monitoring Stations](#)
  - [Fish Index Of Biotic Integrity](#)
  - [Known Contaminated Sites List](#)
  - [Place Names](#)
  - [Zip Codes](#)
  - [Municipalities](#)
  - [Counties](#)
  - [Congressional Districts](#)
  - [Legislative Districts](#)
  - [CAFRA Boundary](#)
  - [Highlands](#)
  - [Pinelands Boundary](#)
  - [Open Space \(State\)](#)
  - [Natural Heritage Priority Sites](#)
  - [Pinelands Management Area](#)
  - [Sewer Service Areas](#)
  - [Roads \(NJDOT\)](#)
  - [Roads \(Tele Atlas\)](#)
  - [Category One Waters](#)
  - [Surface Water](#)



## Query

[Find location of Interest](#)

## Legend

- Counties
- Aerial Photos 2002
- Mid-Atlantic States
- New Jersey
- Other Mid-Atlantic States

Scale: 1:17,704 Map: 534266.1693 , 587558.1233 -- Image: 300 , 296

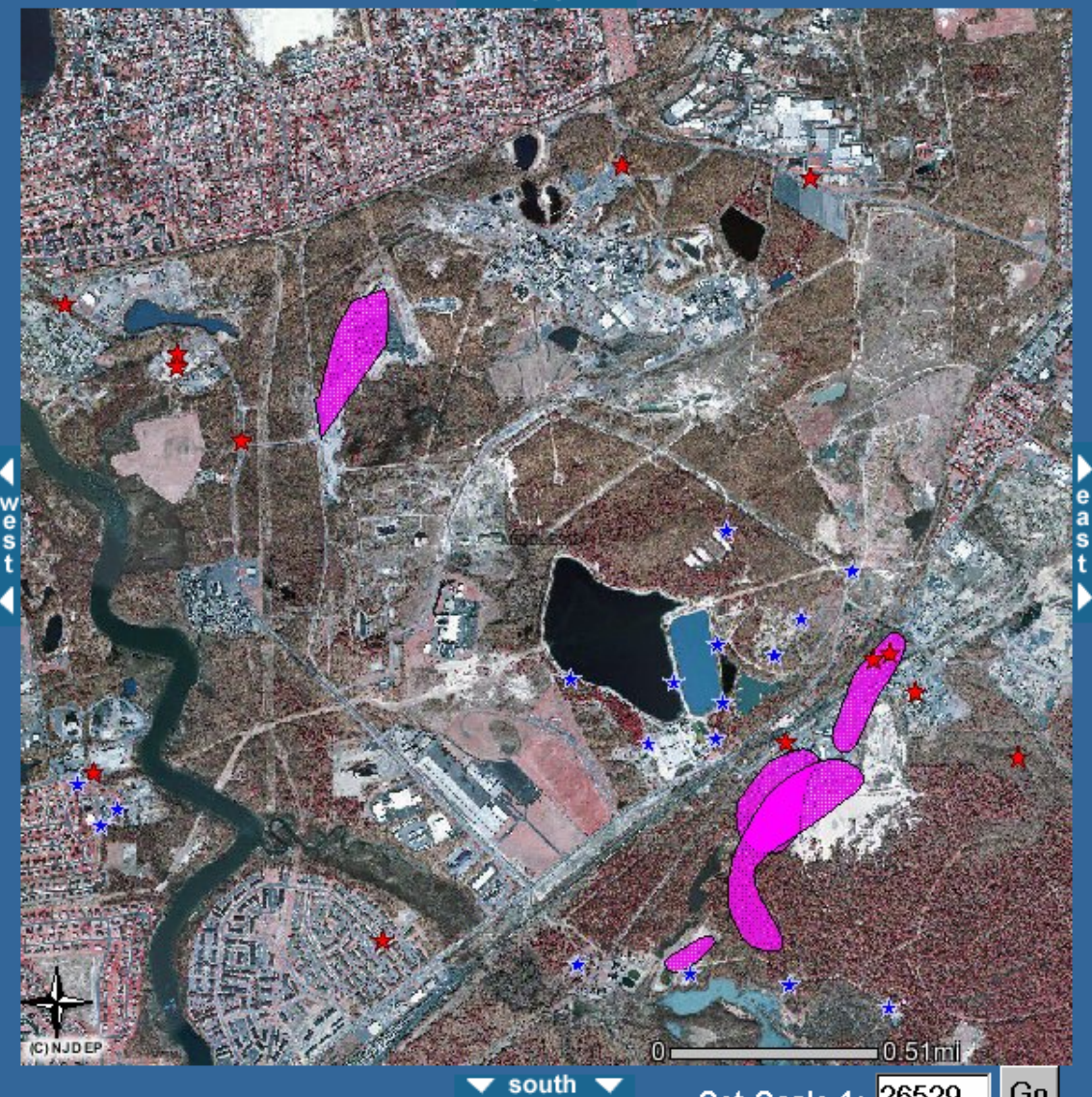


## Data Layers

[refresh map](#)

AutoRefresh Map

- Visible Active
- [Chromate Sites](#)
  - [Public Community Water Supply Wells](#)
  - [Air Monitoring Stations](#)
  - [Fish Index Of Biotic Integrity](#)
  - [Known Contaminated Sites List](#)
  - [Place Names](#)
  - [Zip Codes](#)
  - [Municipalities](#)
  - [Counties](#)
  - [Congressional Districts](#)
  - [Legislative Districts](#)
  - [CAFRA Boundary](#)
  - [Highlands](#)
  - [Pinelands Boundary](#)
  - [Open Space \(State\)](#)
  - [Natural Heritage Priority Sites](#)
  - [Pinelands Management Area](#)
  - [Sewer Service Areas](#)
  - [Roads \(NJDOT\)](#)
  - [Roads \(Tele Atlas\)](#)
  - [Category One Waters](#)
  - [Surface Water](#)



## Query

[Find location of Interest](#)

## Legend

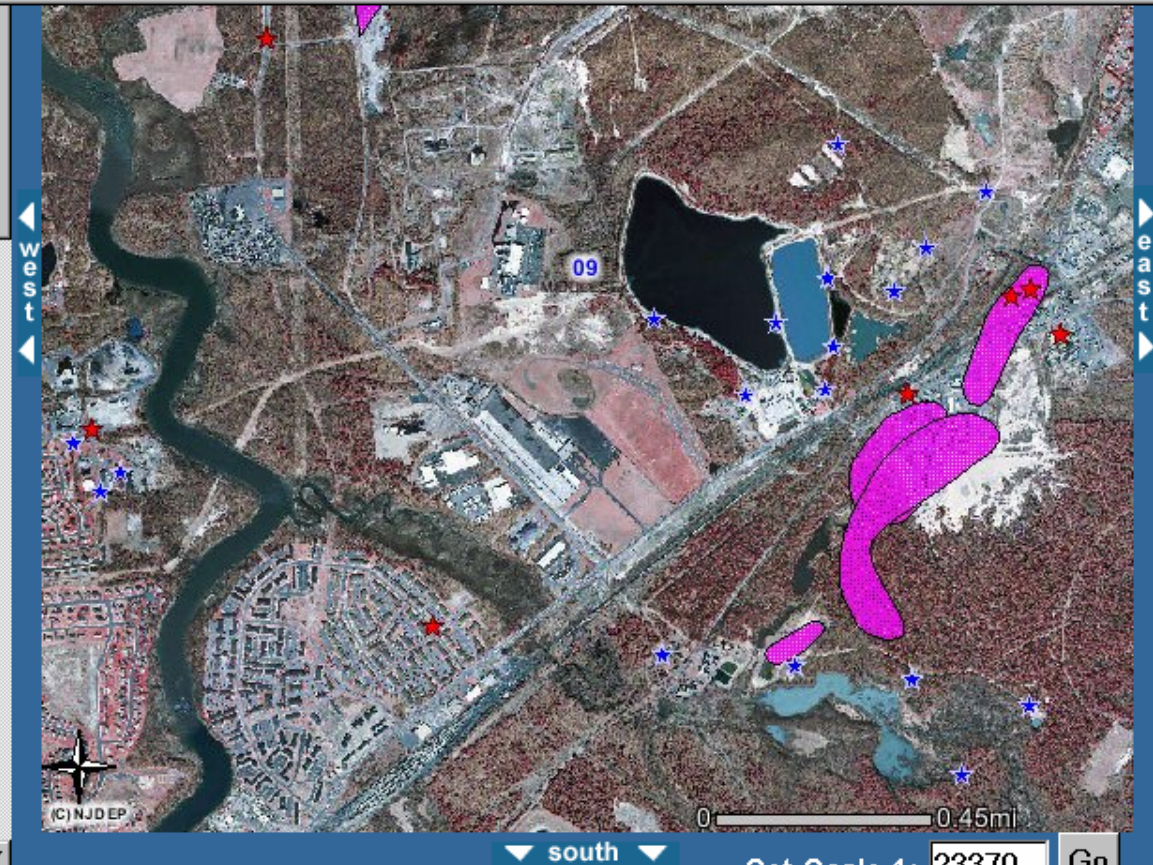
- Public Community Water Supply Wells
- Known Contaminated Sites List
- Counties
- Groundwater Contamination Areas (CEA)
- Groundwater Contamination Areas (CKE)
- Aerial Photos 2002
- Mid-Atlantic States
- New Jersey
- Other Mid-Atlantic States



### Known Contaminated Sites List

Rec	Site Id	kcsl Name	Address	Municipality	County	Zip	PI Number	Lead Program	Case Status	Status Date	Remedial I
1	66339	EVOR PHILLIPS LEASING COMPANY	WATERWORKS RD	Old Bridge Twp	Middlesex	08879	G000004877	BCM	Active	Mon, 29 Apr 2002 00:00:00	D: Multi-Phased RA Multiple Source/Rel Media Including GW

- [Stations](#)
- [Fish Index Of Biotic Integrity](#)
- [Known Contaminated Sites List](#)
- [Place Names](#)
- [Zip Codes](#)
- [Municipalities](#)
- [Counties](#)
- [Congressional Districts](#)
- [Legislative Districts](#)
- [CAFRA Boundary](#)
- [Highlands](#)
- [Pinelands Boundary](#)
- [Open Space \(State\)](#)
- [Natural Heritage Priority Sites](#)
- [Pinelands Management Area](#)
- [Sewer Service Areas](#)
- [Roads \(NJDOT\)](#)
- [Roads \(Tele Atlas\)](#)
- [Category One Waters](#)
- [Surface Water](#)



- Public Community Water Supply Wells
- Known Contaminated Sites List
- Counties
- Groundwater Contamination Areas (CEA)
- Groundwater Contamination Areas (CKE)
- Watershed Management Areas
- Aerial Photos 2002
- Mid-Atlantic States
- New Jersey
- Other Mid-Atlantic States



### Public Community Water Supply Wells

Rec	Well ID	Well Permit Number	Well Owner	Well System	Name of Well	Location of Well	County	Municipality	Quadrangle	Latitude (DDMMSS)	Longitude (DDMMSS)
1	2805579	28-05579	Perth Amboy Municipal Utilities		Well 5	Bordentown Amboy Tpk	Middlesex	Old Bridge Twp	South Amboy NJ-NY	402536.495	742002.271

- [Water supply wells](#)
- [Air Monitoring Stations](#)
- [Fish Index Of Biotic Integrity](#)
- [Known Contaminated Sites List](#)
- [Place Names](#)
- [Zip Codes](#)
- [Municipalities](#)
- [Counties](#)
- [Congressional Districts](#)
- [Legislative Districts](#)
- [CAFRA Boundary](#)
- [Highlands](#)
- [Pinelands Boundary](#)
- [Open Space \(State\)](#)
- [Natural Heritage Priority Sites](#)
- [Pinelands Management Area](#)
- [Sewer Service Areas](#)
- [Roads \(NJDOT\)](#)
- [Roads \(Tele Atlas\)](#)
- [Category One Waters](#)
- [Surface Water](#)



#### Legend

- ★ Public Community Water Supply Wells
- ★ Known Contaminated Sites List
- Counties
- Groundwater Contamination Areas (CEA)
- Groundwater Contamination Areas (CKE)
- Watershed Management Areas
- Aerial Photos 2002
- Mid-Atlantic States
- New Jersey
- Other Mid-Atlantic States



Total Depth Drilled (feet)	Depth (feet)	Surface elevation (feet)	Casing Diameter (Inches)	Top of Opening	Bottom of opening	Screen diameter (in.)	Static Water Level (feet)	Name of driller	Drilling method	Geologic Formation	Name of Aquifer	Aquifer Type	Pumping Rate
85	80	15	16	50	80	16	20	Layne-New York Co Inc		Magothy Formation - Old Bridge Sand member	upper Potomac-Raritan-Magothy aquifer	Unconfined	580

- [Water supply wells](#)
- [Air Monitoring Stations](#)
- [Fish Index Of Biotic Integrity](#)
- [Known Contaminated Sites List](#)
- [Place Names](#)
- [Zip Codes](#)
- [Municipalities](#)
- [Counties](#)
- [Congressional Districts](#)
- [Legislative Districts](#)
- [CAFRA Boundary](#)
- [Highlands](#)
- [Pinelands Boundary](#)
- [Open Space \(State\)](#)
- [Natural Heritage Priority Sites](#)
- [Pinelands Management Area](#)
- [Sewer Service Areas](#)
- [Roads \(NJDOT\)](#)
- [Roads \(Tele Atlas\)](#)
- [Category One Waters](#)
- [Surface Water](#)



### Legend

- ★ Public Community Water Supply Wells
- ★ Known Contaminated Sites List
- Counties
- Groundwater Contamination Areas (CEA)
- Groundwater Contamination Areas (CKE)
- Watershed Management Areas
- Aerial Photos 2002
- Mid-Atlantic States
- New Jersey
- Other Mid-Atlantic States



## Data Layers

- [refresh map](#)
- AutoRefresh Map
- Visible Active
- [Chromate Sites](#)
  - [Public Community Water Supply Wells](#)
  - [Air Monitoring Stations](#)
  - [Fish Index Of Biotic Integrity](#)
  - [Known Contaminated Sites List](#)
  - [Place Names](#)
  - [Zip Codes](#)
  - [Municipalities](#)
  - [Counties](#)
  - [Congressional Districts](#)
  - [Legislative Districts](#)
  - [CAFRA Boundary](#)
  - [Highlands](#)
  - [Pinelands Boundary](#)
  - [Open Space \(State\)](#)
  - [Natural Heritage Priority Sites](#)
  - [Pinelands Management Area](#)
  - [Sewer Service Areas](#)
  - [Roads \(NJDOT\)](#)
  - [Roads \(Tele Atlas\)](#)
  - [Category One Waters](#)
  - [Surface Water](#)



## Query

[Find location of Interest](#)

## Legend

- Public Community Water Supply Wells
- Known Contaminated Sites List
- Counties
- Well Head Protection Areas
  - Tier 1: 2-Year
  - Tier 2: 5-Year
  - Tier 3: 12-Year
- Groundwater Contamination Areas (CEA)
- Groundwater Contamination Areas (CKE)
- Aerial Photos 2002
- Mid-Atlantic States
  - New Jersey
  - Other Mid-Atlantic States